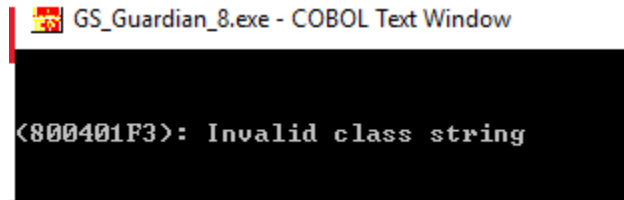


KnowledgeBase Article 2125

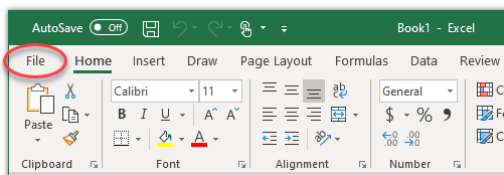
Excel Security Issues

Certain functions within Guardian require Microsoft Excel to complete. These include Process Sheets, both Full and Lean. Microsoft Security can prohibit Guardian from communicating with Excel resulting in a variety of errors including a non-descript COBOL error...

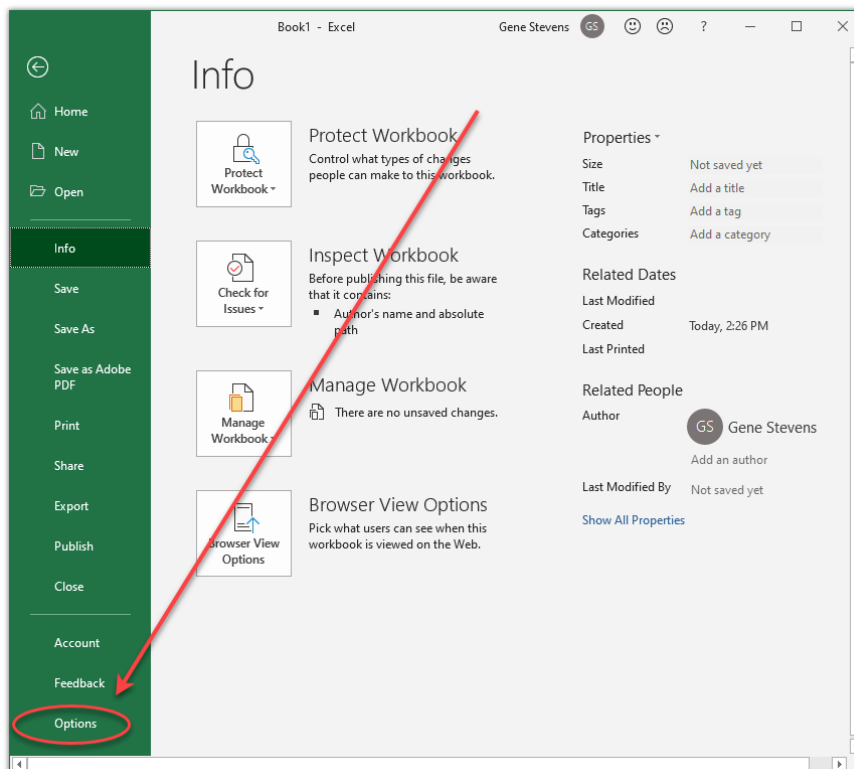


To properly set the Security for Guardian communication with Excel...

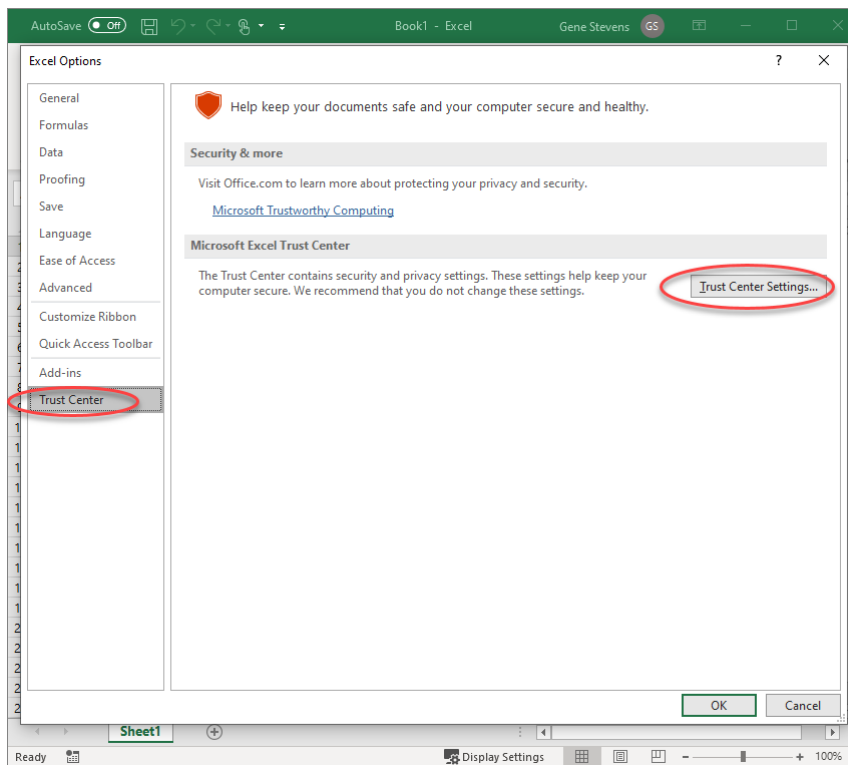
1. In Excel, select the "File" Menu



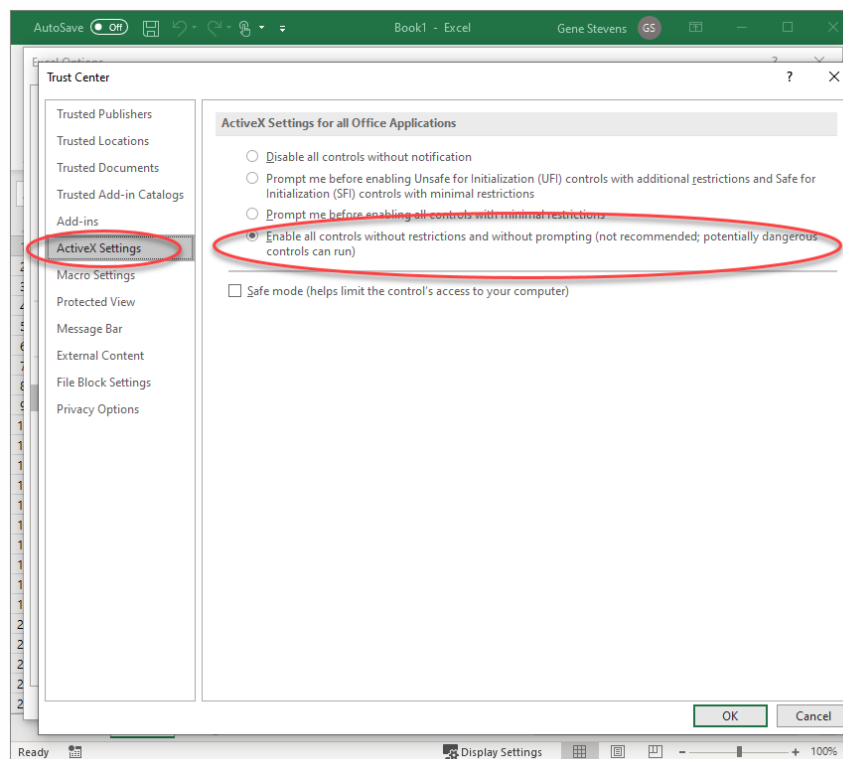
2. click "Options"



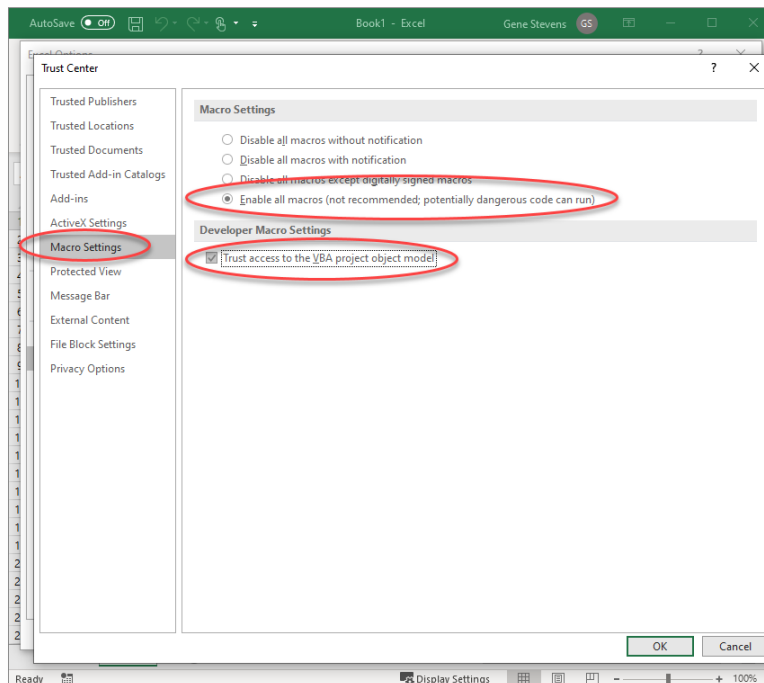
3. Select "Trust Center" from the list on the left, then click "Trust Center Settings..."



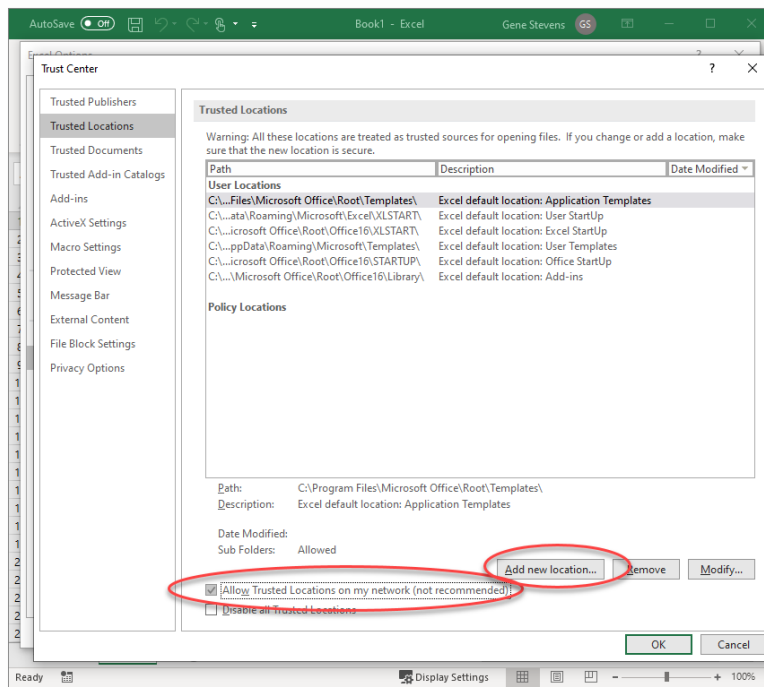
4. Select "ActiveX Settings" from the list on the left...
 - a. Click "Enable all controls..."



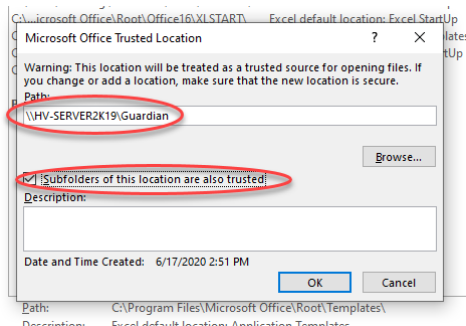
5. Select "Macro Settings" from the menu on the left...
 - a. Click "Enable all macros..."
 - b. Check "Trust access to the VBA..."



6. Select "Trusted Locations" from the menu on the left...
 - a. Check "Allow Trusted Locations..."
 - b. Click "Add new location..."



- i. Enter the Path "\\HV-SERVER2K19\Guardian"
- ii. Check "Subfolders of this location are also trusted"
- iii. Click OK



- c. Click "Add new location..."
 - i. Enter the Path "C:\GSSI7"
 - ii. Check "Subfolders of this location are also trusted"
 - iii. Click OK
7. OK out of the File menu and restart Excel