

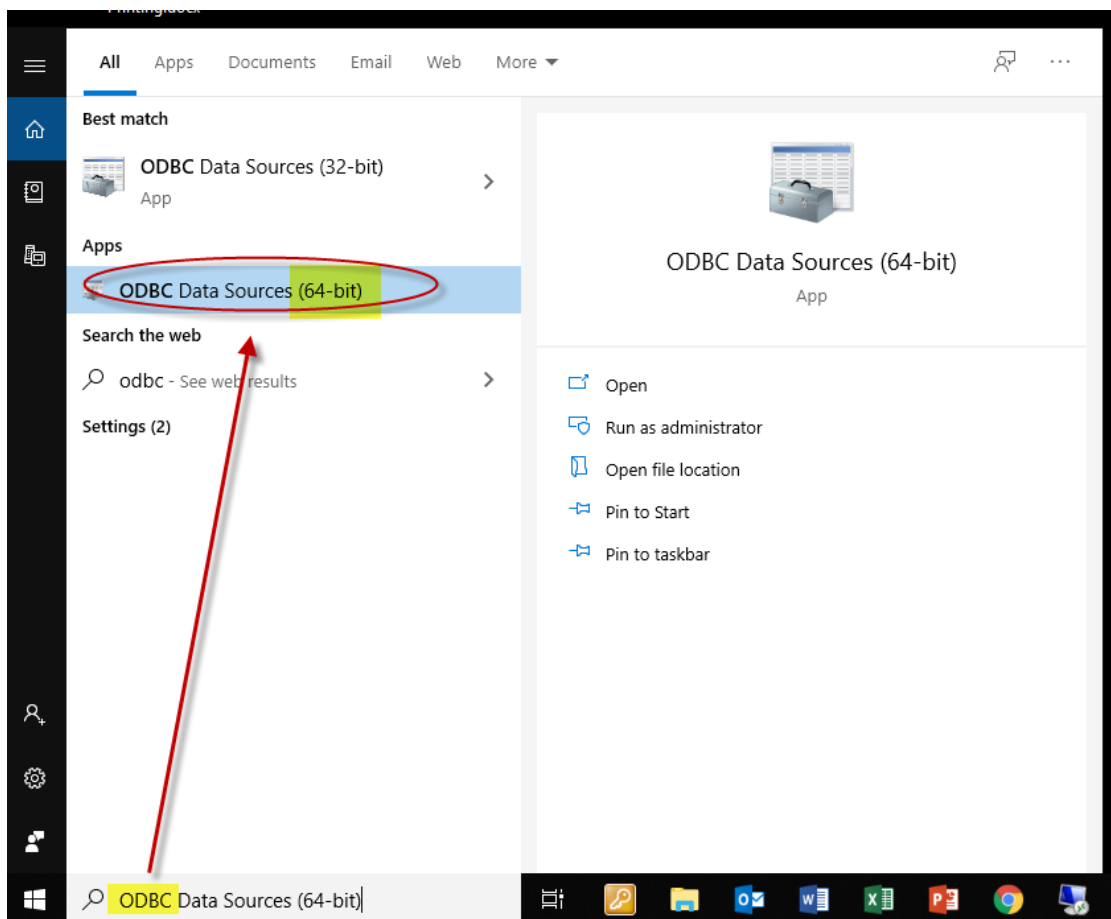
## KnowledgeBase Article 2008a

### ODBC SETUP IN 64-BIT ACCESS

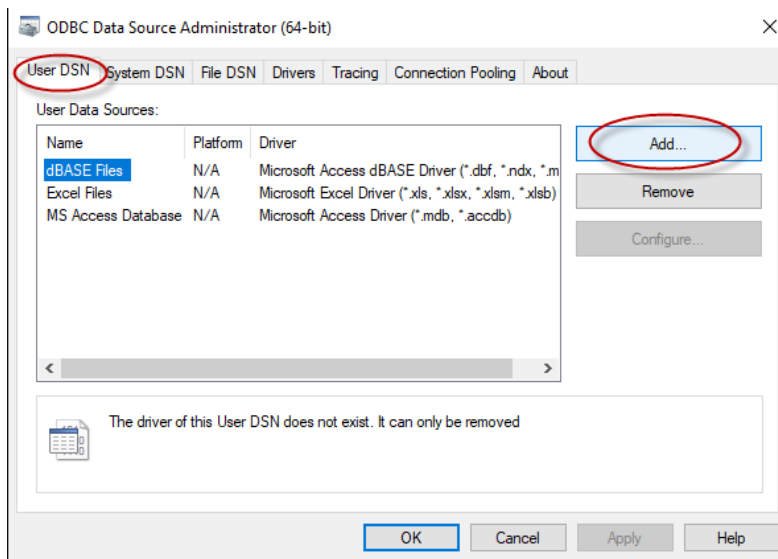
ODBC can be setup on a local computer to allow queries into the Guardian database to be run directly from Access. This allows the user to perform queries of the Guardian data at any time from Excel and without the possibility of accidental changes to the database.

**Note:** When used with Microsoft Access, DO NOT create a Link to the database. This can cause serious damage to the data. Guardian is not responsible for any actions performed on the database as the result of careless or inadvertent use of any database manipulation tools. Do not use any ODBC tools unless you are knowledgeable in their use and effect or instructed to do so by Guardian support.

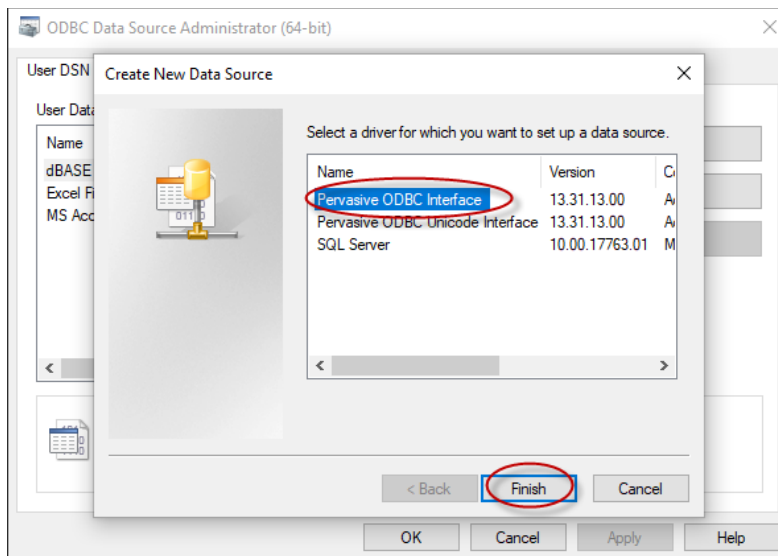
1. From the Start menu Search for "ODBC"
  - a. Select ODBC Data Sources (64-bit)



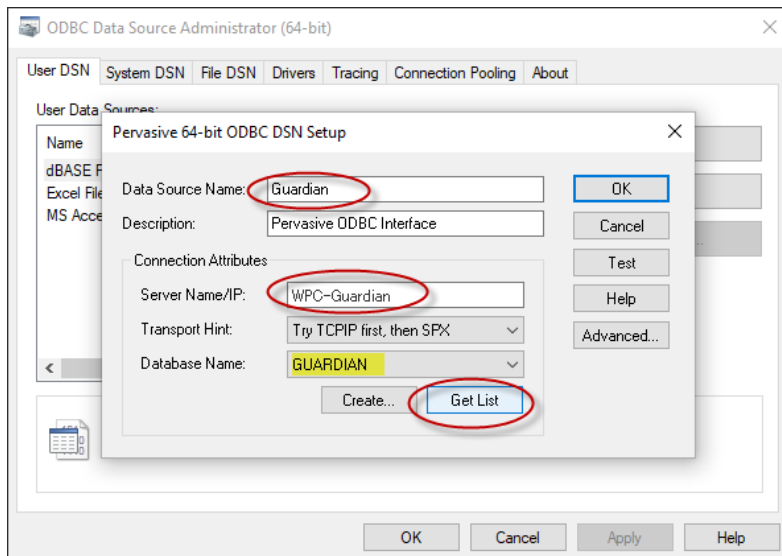
2. From the User DSN tab, click Add



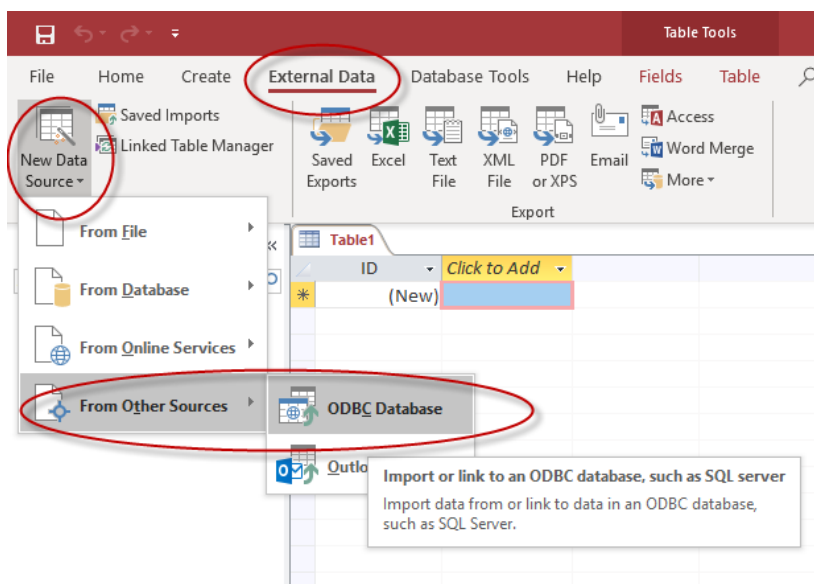
3. Select the Pervasive ODBC Interface
  - a. click Finish



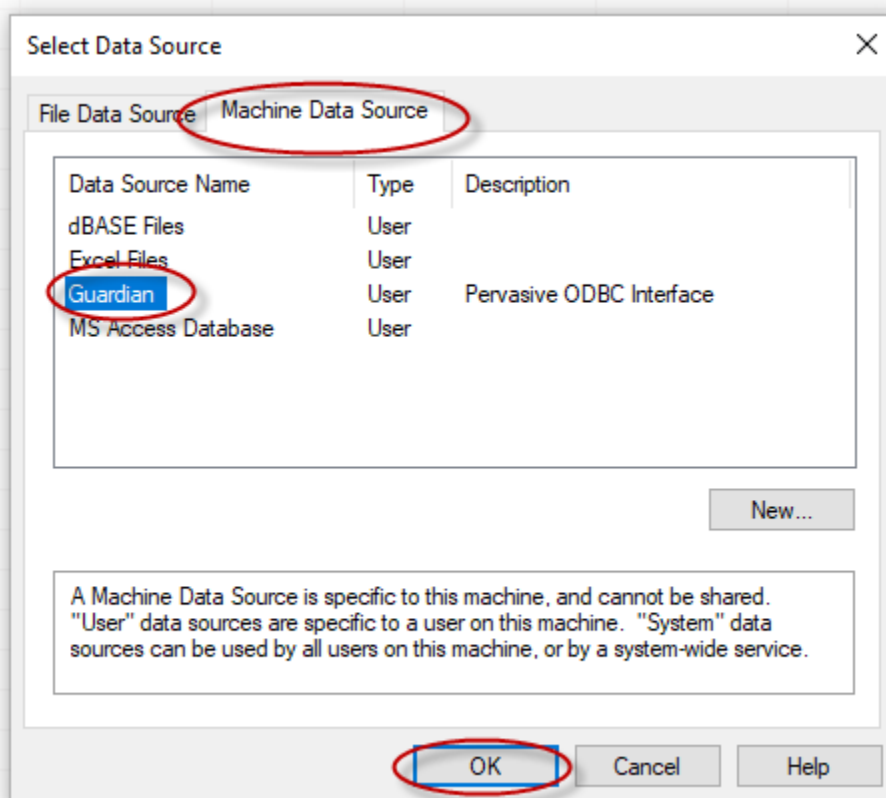
4. Type Guardian in the Data Source Name
  - a. Enter your Guardian Server Name or IP Address
  - b. Click Get List
  - c. Select GUARDIAN in the Database Name drop down list
  - d. Click OK



5. Guardian is now listed as an ODBC Data Source...click OK
6. Open Microsoft Access (Office 365 is used in these illustrations)
7. Under External Data...
  - a. Select From Other Sources
  - b. Select ODBC Database



8. Select "Import the source data into a new table in the current database." then click OK
9. Click the "Machine Data Source" tab
10. Select the Guardian data source created in step 4 above and click OK



11. Select the Tables you wish to query and click OK

