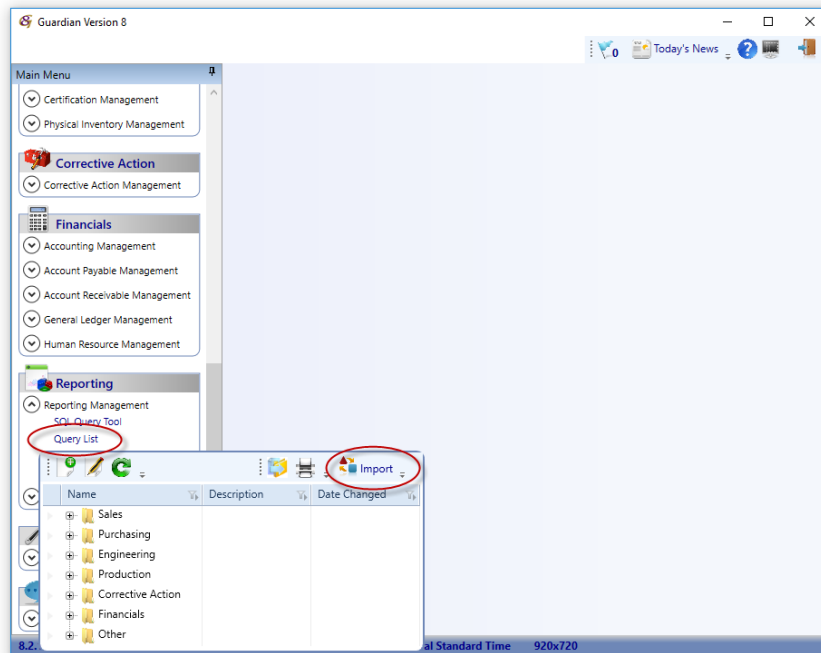


## KnowledgeBase Article 2007

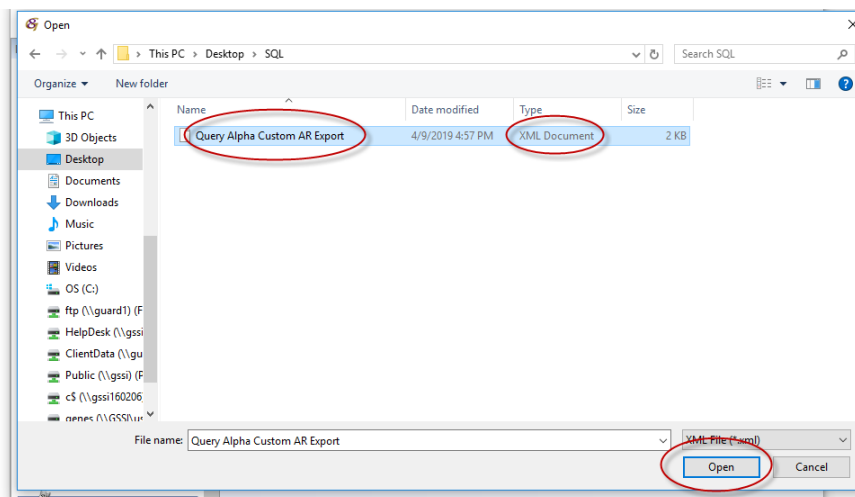
### SQL QUERY IMPORT / INSTALL

The import of custom SQL queries is now a simple process. Guardian will provide the user with an XML file containing all information relating to the import and use of the SQL query.

1. Unzip the *CustomQuery.XML* file to the desktop
2. In Guardian, navigate the main menu to Reporting > Reporting Management > Query List

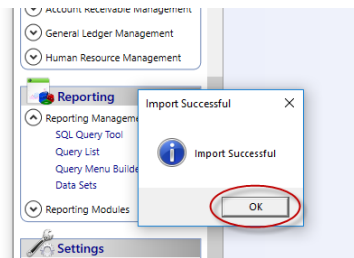


3. Click the Import button
4. Select the Custom Report.XML file from the desktop...click Open



5. The SQL Query will be installed to the proper location

- Click the OK button on the Import Successful screen



- Locate the SQL Query on the Query List to run the query

